

## PROJECT REINDEER GAME PRINT GUIDE

Hey, so your ready to start printing out some cover art and manuals, awesome.. but before you hit that print button, let's just check a few things on your printer options to make sure the printouts are going to look great and be sized correctly. Everything in the download files are high resolution and correctly sized for the CD cases, but sometimes printers have a mind of their own, so lets just check 2 things before we print.

### CHECK 1

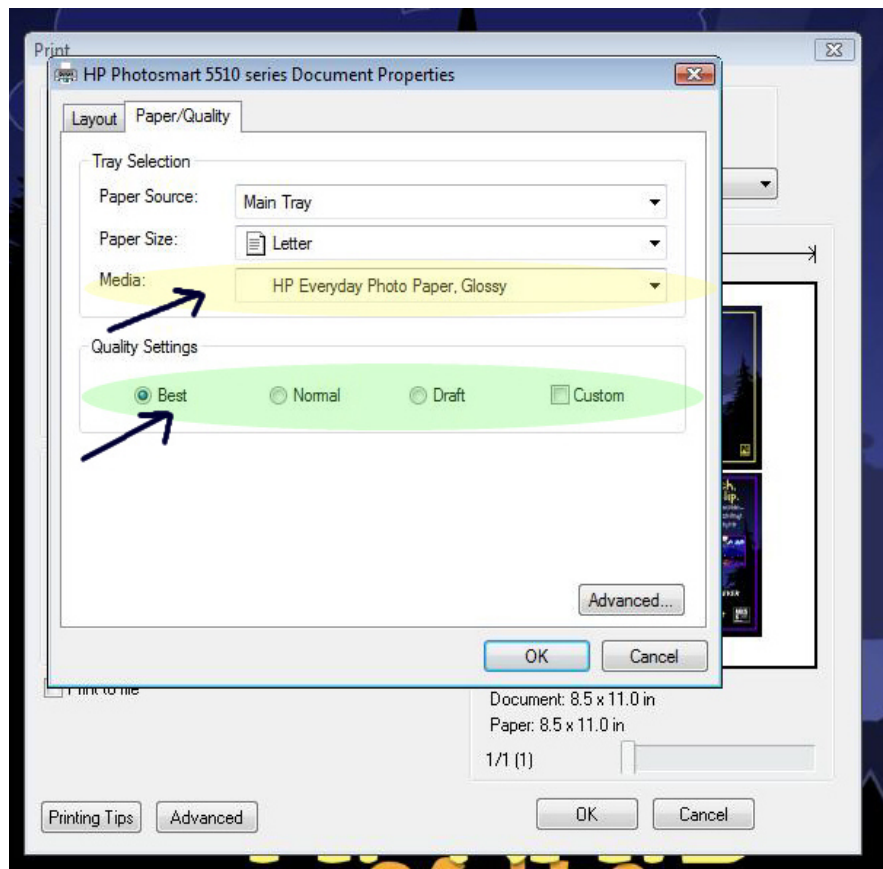
#### *Paper choice and Printer settings*

Using regular multi-purpose paper will work fine for the cover, back, and manual art. If you are going to use regular paper the default mode of your printer (**normal** quality setting) will work fine. In fact we recommend the default “normal” quality printer setting for all of your printouts with one exception.

If you happen to have some Photo Printing paper laying around the house, we recommend using that for your cover and back art as it really gives the art that extra pop.. To be sure to get the most out of your photo paper remember to go into your **printer properties** and select the paper type (photo paper) and reset your Quality setting to “**best**”.

(See highlighted section in photos 1)

photo 1



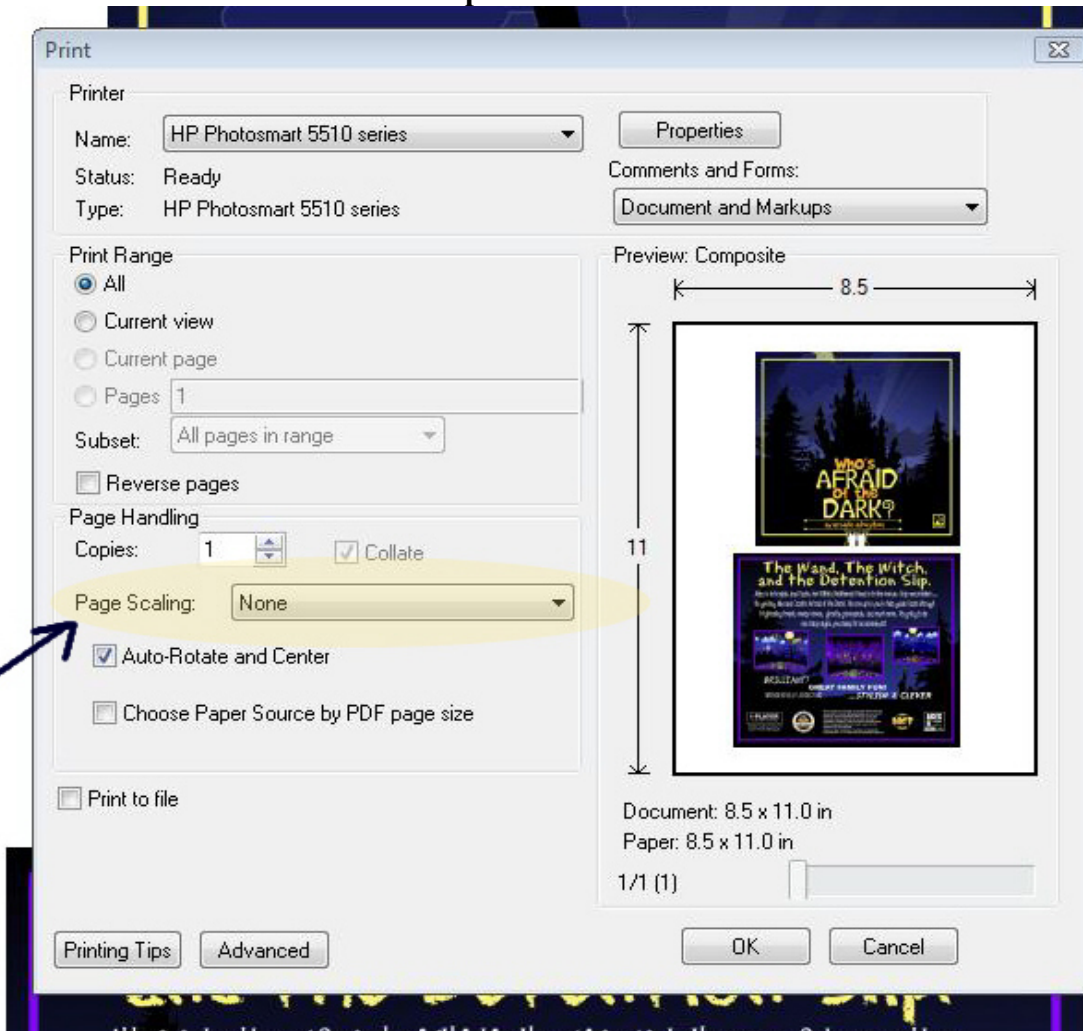
-You can find this screen under your Printer properties

## CHECK 2

### Artwork sizing

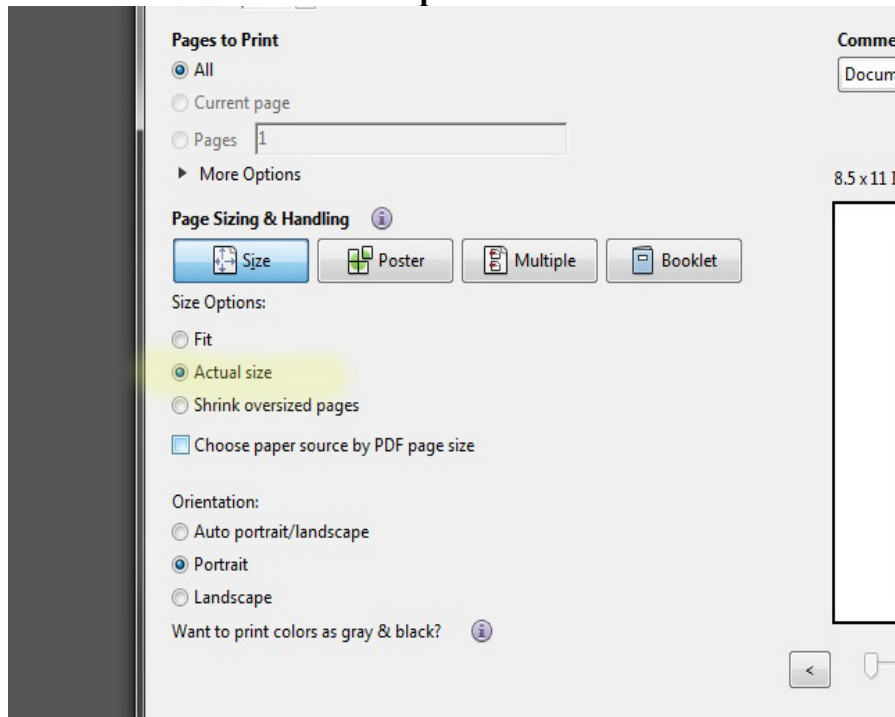
As you have probably noticed our manuals and cover and back art are in pdf files. We chose pdf because they allow for great clarity and ease of use. In most cases you can actually just open the pdf on our site and print directly from there. We just ask before you hit the print button the first time you check one setting beforehand in order to make sure the printout will be perfectly sized for the cd case. The setting in question will be on your pop up printer prompt page. It may read “**Page scaling**” (see photo 2) if it is please **make sure that this is set to “None”**. In other windows settings it may pop up as “**Actual Size**” (see photo 3) please be sure to **select that box**, or you may see a prompt that says “**fit to page**” see (photo 4) in this case you want to make sure the box is **not** selected. All of this is to avoid the printers/systems which have an annoying habit of switching their default on pdf printing to something other than the actual image size ( Grrrr.) and this can shrink printout sizes by up to 7% and drive people batty. Anyway, if you find you do have to make a change, you'll likely only have to do it once, as once its correctly set, the new default setting will be in and you'll be good to go and can open and print the artwork right from our website from here on out without any problems.

photo2



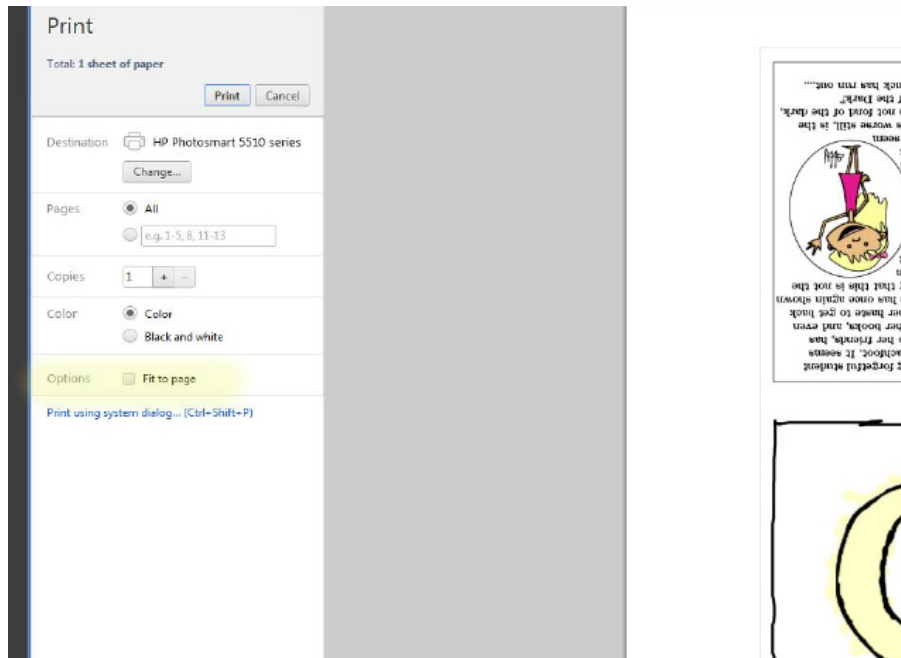
-if this is your printer screen select “none”

photo 3



-if this is your print screen select “actual size”

photo 4



-if this is your print screen make sure to UNSELECT “fit to page”

And that's really it, with these two things checked and correctly set you should be good to go! Have fun and enjoy creating your Reindeer Games.

As always if you have any questions simply send us an email and we will get back to you asap.  
Thanks.

---

Additional info for those printing CD label art.

Our Cd Label art file is a high resolution jpg. Please simply download it and then scale it within your cd label templates as needed. Avery Labels offer most of their templates online and are easy to use. See link below.

[http://www.avery.com/avery/en\\_us/Templates-%26-Software/](http://www.avery.com/avery/en_us/Templates-%26-Software/)

otherwise please refer to your cd labels packaging for product number and template availability.